



27 Northbrook Way

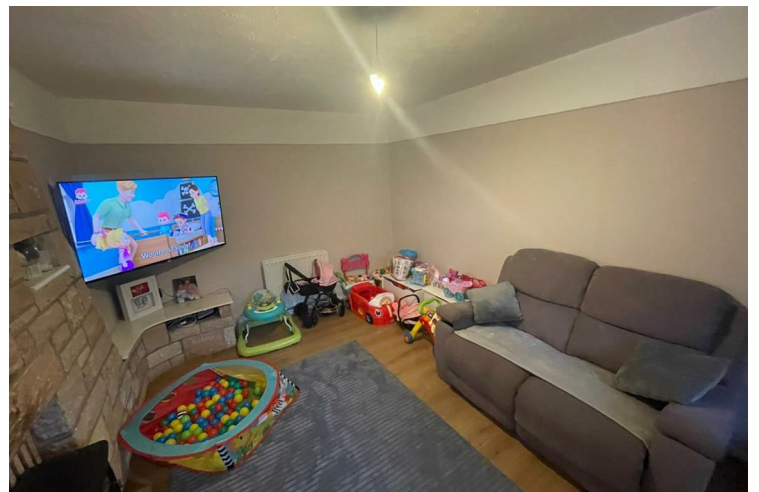
£900 PCM

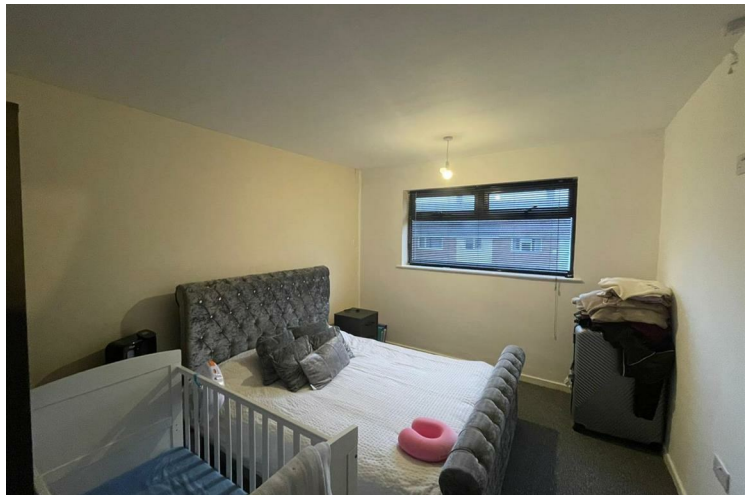
Wirral

Welcome to Northbrook Way, Wirral - a charming location for this modern terraced house. This property boasts a cosy reception room, perfect for relaxing or entertaining guests. With one bathroom, convenience is at your fingertips.

Situated in a sought-after area, this house offers a comfortable living space suitable for individuals or small families. The modern design ensures a stylish and contemporary feel throughout the property.


Located in Wirral, this home provides easy access to local amenities, schools, and transport links, making it an ideal choice for those looking for convenience and comfort. Don't miss the opportunity to make this lovely house your new home!









| Energy Efficiency Rating | | Current | Potential |
|--|--|---|-----------|
| <i>Very energy efficient - lower running costs</i> | | | |
| (92 plus) A | | | |
| (81-91) B | | | 85 |
| (69-80) C | | | |
| (55-68) D | | 63 | |
| (39-54) E | | | |
| (21-38) F | | | |
| (1-20) G | | | |
| <i>Not energy efficient - higher running costs</i> | | | |
| England & Wales | | EU Directive 2002/91/EC  | |

Agents Note: Whilst every care has been taken to prepare these particulars, they are for guidance purposes only. All measurements are approximate and are for general guidance purposes only and whilst every care has been taken to ensure their accuracy, they should not be relied upon and potential buyers/tenants are advised to recheck the measurements

Pall Mall Liverpool Mistoria
22 Pall Mall
Liverpool
L3 6AL

0151 282 1539
info@mistoria.co.uk
mistoria.co.uk

